



Maja B. Poser¹, Filip Zdraveski^{1,a}, Martin Petrevski^{1,b}, Miloš Pavlović², Vladan Jeremić²

HARDFACING ALLOYS FOR EXCAVATOR TEETH COATING

TVRDE LEGURE ZA NAVARIVANJA ZUBA BAGERA

Original scientific paper / Originalni naučni rad

Paper received / Rad primljen

August 2024.

Paper accepted / Rad prihvaćen

November 2024.

Author's address / Adresa autora

¹ University „Ss. Cyril and Methodius“, Faculty of Mechanical Engineering, Karposh II bb, 1000 Skopje, Republic of North Macedonia

² Welding Institute, Grčića Milenka 6, Belgrade, Serbia

Email / ORCID ID

^a filip.zdraveski@mf.edu.mk

^b martin.petreski@mf.edu.mk / 0000-0001-6308-3366

Keywords: abrasive wear, roto excavator, bucket teeth, hardfacing alloys

Ključne reči: abrazivno habanje, roto bager, zubi bagera, tvrdo navarivanje

Abstract

The capacity of the rotor excavator depends to a significant extent on the bucket teeth. Abrasive wear of cutting teeth and cutting edges is typical when digging sand, sandy clay and gravel in common rock environments. Of particular importance is the contribution of the correct geometry of the teeth, their position on the bucket, and especially their sharpness, which they lose over time. Over time, teeth become blunt due to abrasive wear and their geometry changes. The digging resistance becomes greater, and therefore the efficiency of the rotor excavator decreases. White cast iron stands out as a base alloy that has wear resistance, but has very low toughness and often brittle fracture under impact loads. Manganese steel, although it has the property of deformation strengthening, has no wear resistance when digging in sand. This condition can be improved by choosing a material more resistant to abrasive action. Excavator teeth that fail due to abrasive wear can be protected from abrasive wear by the use of hardface coating. These hardfacing alloys are presented in this paper.

Rezime

Kapacitet rotobagera u značajnoj meri zavisi od zuba za kopanje. Abrazivno habanje reznih zuba i reznih ivica je tipično kada se kopa pesak, peskovita glina i šljunak u uobičajenom kamenom okruženju. Od posebnog značaja je doprinos pravilne geometrije zubaca, njihovog položaja na korpu, a posebno njihove oštine, koju vremenom gube. Vremenom zubi postaju tupi zbog abrazivnog habanja i menja se njihova geometrija. Otpor kopanja postaje veći, a samim tim i efikasnost rotobagera se smanjuje. Belo liveni gvožđe se izdvaja kao osnovna legura koja ima otpornost na habanje, ali ima nisku žilavost i često dolazi do krto g loma pod udarnim opterećenjem. Manganski čelik, iako ima svojstvo jačanja, pri kopanju u pesku nema otpornost na habanje. Ovo stanje se može poboljšati odabirom nekog materijala otpornijeg na abrazivno dejstvo. Zubi bagera koji otkazuju usled abrazivnog habanja mogu se zaštititi od abrazivnog habanja upotrebom tvrdog oblaganja. Ove tvrde legure su predstavljene u ovom radu.

The paper was published in its original form in the Proceedings of the 33rd Conference with international participation "Welding 2024" held in Vrnjačka Banja, Serbia from October 2 to 5, 2024.



1. Introduction

In the mining industry, the abrasion of the components is a common occurrence in machines that perform excavation, transport and processing of ores and minerals. Abrasion is often significant, leading to component failure (Figure 1) that has a significant economic effect on the process [1].



Figure 1. Blunt bucket teeth

Slika 1. Tupi zubi kašike

The excavator bucket teeth commonly undergo the dynamic of wear processes on which material characteristics of bucket teeth should have good strength, good toughness and surface hardness. Toothed excavators work under very complex circumstances with loading and unloading periods, and consequently, the steel to make these components should be selected applying a

balanced criterion between a relatively good toughness and enough hardness to withstand abrasive factors. Nevertheless, under load, the teeth coated with hardened materials may be subjected to cracks propagating through the thickness of the coating or interfacial decohesion (Figure 2) which leads to failures.



Figure 2. Delamination of hardfaced layers

Slika 2. Delaminacija navarenih slojeva

Weldability is an additional property to be considered in the selection of the base material in

order to allow for easy coating application in those zones exposed to abrasion [3].



The different types of hard facing materials which are wear resistant can be employed on the substrate surface of excavator bucket teeth material. For example, steel alloys containing Cr, V and Nb could be welded onto the steel surface. This protection method may be an efficient solution for excavator bucket teeth wear protection.

Nowadays, an excavator tooth is considered successful in terms of abrasion resistance, if it is replaced after a week of excavation on the rotor excavator.

2. Principle of substrate selection and coating application

In order to evaluate the teeth and study which hardfacing alloy is most suitable in terms of abrasion for a given excavation case, it is necessary to select a substrate and weld metal overlay alloy.

Non-hardfaced excavator teeth used for excavation are made of high tensile steels that can be hardened and tempered [4] and offer good combination of ductility and hardness combined with excellent resistance to shock. Usually, if these teeth are insufficient in terms of abrasion, they are used as a surfacing substrate. Such an example is shown in table 1.

Table 1. Chemical composition (wt.%) of high tensile steel 22Mn6 (w.nr.1.1160)

Tabela 1. Hemijski sastav (mas.%) visokozateznog čelika 22Mn6 (w.nr.1.1160)

C [%]	Si [%]	Mn [%]	Ni [%]	Cr [%]	Mo [%]	S [%]	P [%]	Fe [%]
0.15-0.25	0.10-0.35	1.30-1.70	0.40 max	0.25 max	-	0.06 max	0.06 max	rest

Tool steels can also be considered as a substrate material because they have good wear resistance [5]. However, they have high hardness which makes them sensitive to notches. This may lead to large carbides acting as crack initiators in the fatigue process. Fatigue occurs when the material is exposed to altering/pulsating load. Also, sharp corners and sharp edges in combination with high hardness may also act as places for crack initiation at fatigue loading. For this reason, the high tensile steel with proper heat treatment is more appropriate as excavator bucket teeth substrate.

The welding of hardfacing alloys on the substrate is usually performed in minimum two

steps [6]: a first layer is directly applied over the metallic base, with high percent of dilution. Because of that this layer is not representative of the actual composition of the coating material. This is basic bonding interlayer. So, a second layer is applied over the first one avoiding the dilution problems especially with the carbon. It is the second layer that really resists abrasion (Figure 3). If it is economic, 3 layers are applied, therefore the last two layers are both wear resistant.

The deposition is usually of stringer beads without any transverse oscillation of the electrode which controls the dilution rate within limits.

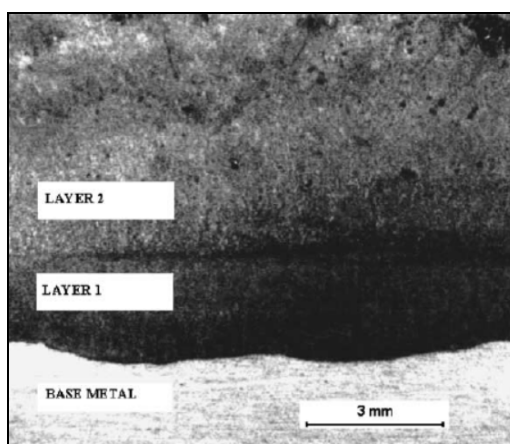


Figure 3. Application of hardfacing alloy in two layers (interlayer and abrasion resistant layer)

Slika 3. Nanošenje legure za navarivanje u dva sloja (međusloj i sloj otporan na abraziju)



3. Materials and methods

3.1 Materials used for hardfacing

Hardfacing consumables can be broadly classified into four groups [7]: iron-based, cobalt-based, nickel-based, and tungsten alloys. They are commercially available in different forms.

Iron-based alloys are most cost-effective group of hardfacing alloys and are mostly used for applications including abrasion, impact, and thermal fatigue resistance. They can be further divided into two subgroups: iron-based with less than 20% alloying elements (steel alloys) and iron-based with more than 20% alloying elements (usually, Cr cast iron alloys) [8].

Alloying elements for the iron-based hardfacing consumables include C, Mn, Cr, Mo, Cu, Ni, Co, V,

Ti, W, Nb, and B (Table 2). They form one or more of the microstructures, including austenite, ferrite, martensite, and carbides, depending on the constituent alloying elements. Iron-based hardfacing alloys with high content of Cr and Mo promote formation of hard carbide and boride phases, which enhances their abrasion resistance properties. These alloys can possess various matrix structures, including austenitic, martensitic, pearlitic, ferritic, or combination of these structures. Some iron-based alloys, like high-chromium carbides, may have transverse surface cracks on hardfacing deposits. Despite these cracks ('relief checks'), the deposits are suitable for many applications in the mining and earth engaging industries.

Table 2. Chemical composition (wt.%) of four hardfacing iron-based electrodes

Tabela 2. Hemijski sastav (mas.%) četiri elektrode za navarivanje na bazi železa

Hardfacing alloy	C [%]	Si [%]	Mn [%]	Nb [%]	Cr [%]	Mo [%]	S [%]	P [%]	Fe [%]
OK 83.50 (H6.25Cr)	0.4	0.6	1.0	0.6	6.0	1.3	-	-	rest
OK 84.78 (H33Cr)	4.5	0.8	1.6	-	33	-	-	-	rest
OK 84.80 (H23Cr)	5.0	2.0	0.7	-	23	-	-	-	rest
OK 83.65 (H2Cr)	0.75	0.4	0.6	-	2.0	-	0.03	0.03	rest

Cobalt-based group of alloys are used for applications that require good wear, oxidation, corrosion, and heat resistance combined with high hot hardness. The cobalt–chromium–tungsten alloy is one of the most versatile and expensive alloys in hardfacing industries [9].

Nickel-based alloys are used mostly for applications that require wear and corrosion resistance at high temperatures [10].

Tungsten Alloys are used for extreme abrasion resistance applications. Tungsten carbide is one of the hardest materials in industrial use and is brittle. Tungsten carbide particles do not melt with the welding arc flames [11].

Based on previous research, high chromium iron-based alloys are the most common and economical alloys for abrasion resistance hardfacing, while nickel-based and cobalt-based alloys are suitable for wear and corrosion resistance hardfacing at high temperatures [12].

Figure 4 provides a general idea of different groups of consumables based on specific application requirements [13]. Standards and guidelines provided in relevant technical publications should also be considered for optimal consumable selection.

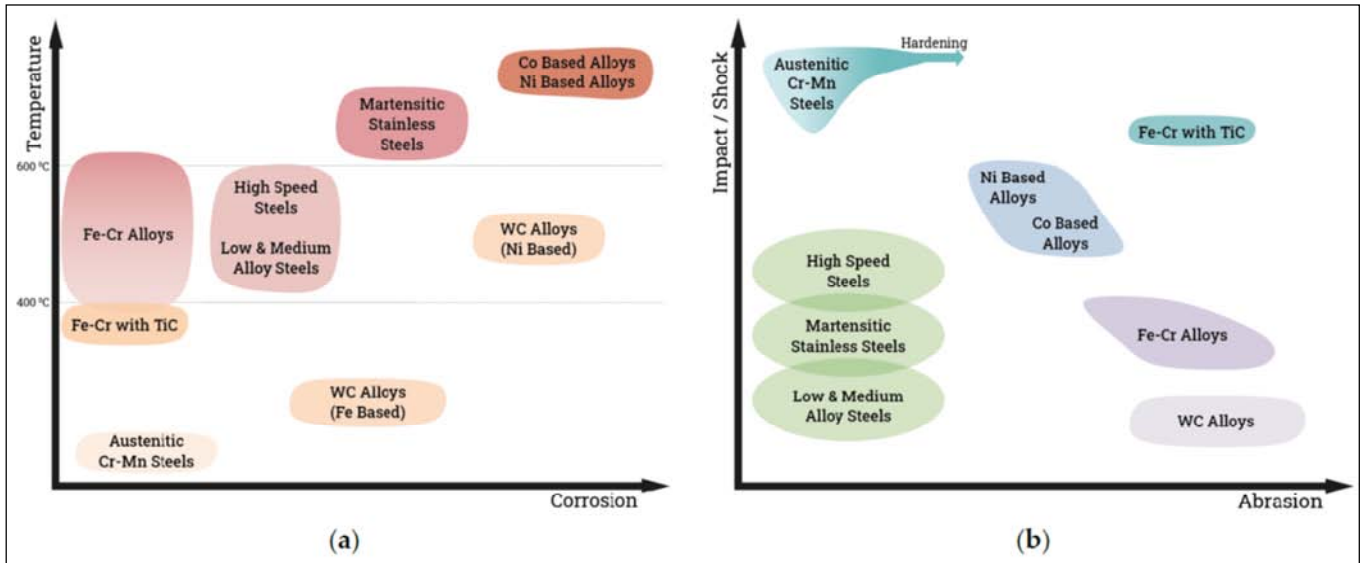


Figure 4. Hardfacing consumables for (a) corrosion and temperature, and (b) abrasion and impact resistance application

Slika 4. Dodatni materijali za navarivanje za (a) primenu u uslovima korozije i visokih temperatura i (b) otpornost na abraziju i udar

3.2 Testing method

The performance of hardfacing coating can be verified in two ways, in the laboratory or through field testing. In both methods, the mass loss parameter is used as an indicator of how successful the hard alloy is in terms of abrasion [14].

Laboratory tests used to evaluate the degree of abrasion are the methods: pin on dry disc with 62-65 HRC, dry test of rotating vulcanized rubber disc with abrasive granule against the sample, and test of rotating vulcanized rubber disc with abrasive granule submerged in water against the sample (Figure 5).



(a)



(b)

Figure 5. Test methods: (a) specimen against rubber disk with abrasive material and (b) pin on dry disk

Slika 5. Metode ispitivanja: (a) uzorak na gumenom disku sa abrazivnim materijalom i (b) igla na suvom disku

A testing force is applied to the sample which, depending on the standard, can be from 30 to 200N. The linear testing velocity of the specimen is approximately around 1 m/s.

Test specimen for the pin on disk method is cylindrical pin of diameter 8mm and length 30mm, hardfaced at their cross-section on one side and subsequently machined to specified sized.



Test samples for test method against vulcanized rubber and abrasive sand are prismatic blocks with dimensions 54x20mm, and 20-24mm thick. They

are previously coated with hardfacing alloy on one side.



Figure 6. Influence of tooth position on degree of abrasion in SRS 2000 rotor excavator

Slika 6. Uticaj položaja zuba na stepen abrazije na rotoru bagera SRS 2000

Unfortunately, the only method that ensures a right evaluation of the component performance is to carry out real field test, which is very tedious and expensive procedure. Field testing of the bucket teeth is complicated because the position of the teeth on the bucket has an important influence on wear (Figure 6). More testing should be carried out, where the teeth will be changed to different positions and on different baskets to minimize the influence of their position [15].

Other important inputs to the field test, not related to the alloy and welding, are: height of

support of the arm, displacement of the support of the arm, number of buckets, angle of attack, average height of the excavation, etc.

Most importantly, no direct correlation between laboratory and field results is possible.

4. Results and discussion

A test was made that included MMAW of different hardfacing alloys on a substrate of high tensile steel 22Mn6. Welding parameters used in the test are given in Table 3.

Table 3. Welding parameters used in the test

Tabela 3. Parametri navarivanja primenjeni tokom testa

Parameters	OK 84.78	OK 84.80	OK 83.50	OK 83.65
Electrode diameter (mm)	3.2	3.2	3.2	3.2
Arc voltage (V)	26	24	18	25
Welding current (A)	128	118	119	125
Welding speed (mm/min)	90-110	90-110	90-110	90-110
Preheating for 1 hour (°C)	180°C	180°C	180°C	180°C
Deposition rate (kg/h)	2.4	2.2	2.1	2.4



The dilution rate, during the process of hardfacing is minimized with three layered multi-pass welding. First layer is done with 2 mm thick layer, and then the surfacing of the second and third layers is done with similar electrodes.

The hardfaced teeth were fitted onto the excavator bucket in place of the standard (uncoated) teeth and field experiment was carried out.

After the test, the teeth revealed various amount of wear shown in Table 4. The wear damage starts from the end of the leading edge and moving inwards, towards the base of the tooth were very little or no wear can be observed. Because of the high abrasiveness of and Moss hardness of the sandy soil, the abrasion is relatively severe.

Table 4. Wear rates and wear rate indices (WRI)

Tabela 4. Brzine habanja i indeksi brzine habanja (WRI)

Hardfacing electrode	Wear rate (gr/hr)	WRI
Uncoated tooth	1.900	1
OK 84.78 (33Cr)	0.110	17.27
OK 84.80 (23Cr)	0.250	7.60
OK 83.50 (6Cr)	0.933	2.03
OK 83.65 (2Cr)	1.436	1.32

5. Conclusions

1. Hardfaced excavator tooth with 33Cr alloy shows almost no wear damage. This is due to the high abrasive wear resistance of the chromium carbides in the coated layers.

2. The tooth hardfaced with 23Cr alloy shows very little damage after field test. The substrate material was not exposed to wear.

3. The 6Cr hardfaced after testing period showed some wear damage and wear of the underlying substrate.

4. The tooth with 2Cr coated layer, underwent severe wear damage. Hardfacing alloy with 2%Cr does not provide much abrasive wear resistance in comparison to other alloys.

5. The outcome of the field test shows that as the percent of chromium (Cr) composition increases in the hardfacing alloy, the abrasive wear resistance improves. Also, the alloy with 2% Cr cannot provide additional wear resistance.

References / Literatura

[1] J.E. Fernandez, R.Vijande, R. Tucho, J. Rodriguez, A. Martin, (2001): Materials selection to excavator teeth in mining industry, *Wear* 250, 11-18

[2] S.Singa, A.S.Kang, J.S. Grewal, G.S. Cheema, (2014): Wear behavior of weld overlays on excavator bucket teeth, *Procedia Material Science* 5, 256-255

5. Zaključci

1. Zub bagera sa navarom od legure 33Cr pokazuje gotovo nikakvo oštećenje usled habanja. To je zbog visoke otpornosti na abrazivno habanje hromovih karbida u slojevima navara.

2. Zub sa navarom od legure 23Cr pokazuje neznatno oštećenje nakon terenskog ispitivanja. Materijal podloge nije bio izložen habanju.

3. Zub sa navarom od 6Cr nakon testiranja pokazuje određeno oštećenje, kao i habanje osnovnog materijala.

4. Zub sa prevlakom od 2Cr pretrpeo je ozbiljno oštećenje usled habanja. Legura za navarivanje sa 2% Cr ne pruža veliku otpornost na abrazivno habanje u poređenju sa drugim legurama.

5. Rezultati terenskog testa pokazuju da se sa povećanjem procenta hroma (Cr) u leguri za navarivanje povećava i otpornost na abrazivno habanje. Takođe, legura sa 2% Cr ne pruža dodatnu otpornost na habanje.

[3] R.Ismail, Z.Muhammad, J.Jamari, A.P.Bayuseno, (2020): Designing and wear testing of excavator bucket teeth for the need of Indonesian mining, *ARPN Journal of Engineering and Applied Sciences*, vol.15 no.1, pp.21-26

[4] S.Singa, V.Shibe, J.S.Grewal, (2011): Comparative study of hard faced excavator bucket teeth against abrasive wear using MMAW process,



International Journal of Materials Science and Engineering, vol.2 no.1-2, 5-8

[5] A. Kang, J.S. Grewal, D.Jain, S.Kang, (2012): Wear behavior of thermal spray coatings on rotavator blades, Journal of Thermal Spray Technology 21-2, 355-359

[6] Shibe, V.; Chawla, (2013): V. An overview of research work in hardfacing, Mech. D.Tandon, H.Li, Z.Pan, D.Yu, W.Pang, (2023): A Review on Hardfacing Process Variables, Challenges, and Future Works, Metals 13-9, 1512

[7] D.Tandon, H.Li, Z.Pan, D.Yu, W.Pang, (2023): A Review on Hardfacing Process Variables, Challenges, and Future Works, Metals 13-9, 1512

[8] Ahn, D.-G. (2013): Hardfacing technologies for improvement of wear characteristics of hot

[9] Venkatesh, B.; Sriker, K.; Prabhakar, V.S.V. (2015): Wear Characteristics of Hardfacing Alloys: State-of-the-art, Procedia Mater. Sci. 10, 527–532

[10] Digambar, B.S.; Choudhary, D. (2014): A review paper on hardfacing processes, materials, objectives and applications. Int. J. Sci. Res.

3,2400–2402 working tools: A Review, Int. J. Precis. Eng. Manuf. 14, 1271–1283

[11] Pradeep, G.R.C.; Ramesh, A.; Prasad, B.D, (2010): A review paper on hardfacing processes and materials, Int. J. Eng. Sci. Technol. 2, 6507–6510.

[12] Venkatesh, B.; Sriker, K.; Prabhakar, V.S.V. (2015): Wear Characteristics of Hardfacing Alloys: State-of-the-art, Procedia Mater. Sci. 10, 527–532

[13] B. Gerard, (2016): Fundamentals of Hardfacing by Arc Welding; Welding Alloys, Florence, KY, USA, –47

[14] ISO 28080:2021-Hardmetals-Abrasion tests for hard metals

[15] F.Miletic, P.Jovanovic, S.Djenadic, (2018): Behavior Determining of Bucket Wheel Drive Depending on the Wear Impact of the Cutting Elements, Procedia Structural Integrity 13, pp.1644-1650



SVIM ČITAOCIMA ŽELIMO SREĆNE NOVOGODIŠNJE I BOŽIĆNE PRAZNIKE!!